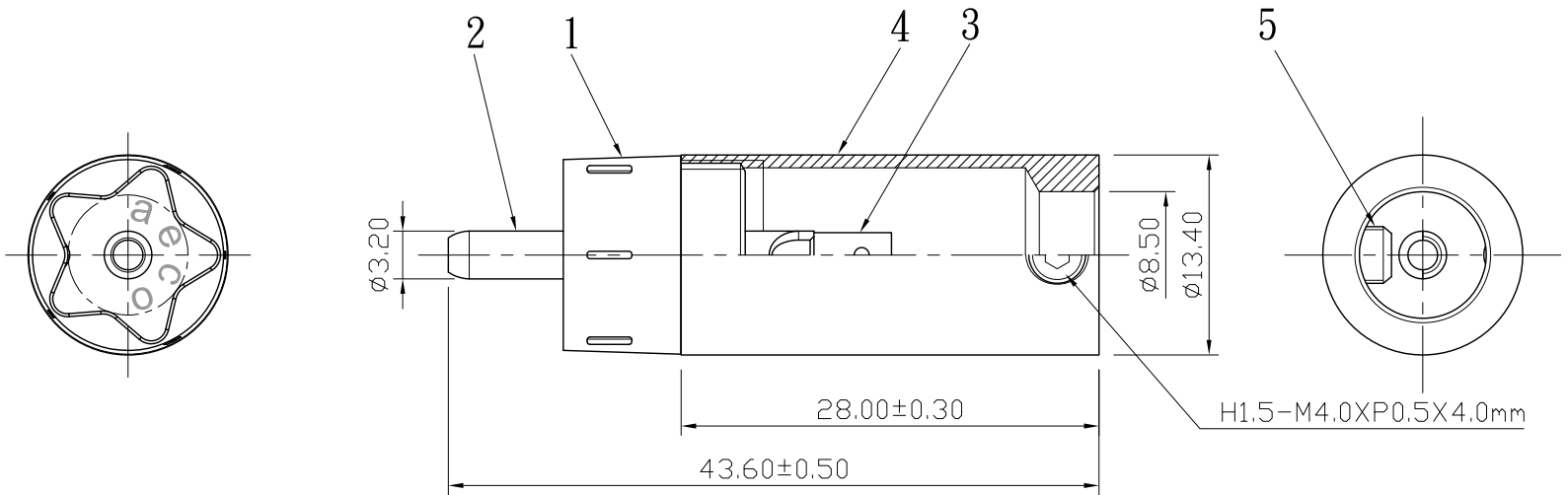
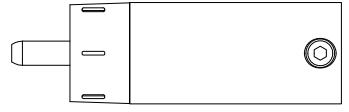



REMARK : RoHS REQUIREMENT APPLIED  
(符合RoHS)



- Note :
- 1.The torque for the screw on this product can be reach maximum 0.3 (lb/in).
  - 2.The recommended soldering temperature :
    - Use temperature-controlled soldering iron and keep 380°C for about 5~8 seconds.
    - Use temperature-controlled soldering iron and keep 360°C for about 9~13 seconds.
    - Use temperature-controlled soldering iron and keep 340°C for about 13~18 seconds.
    - Use temperature-controlled soldering iron and keep 320°C for about 19~25 seconds.



S 1 : 1

7						DIMENSIONS ARE IN MILLIMETERS  UNLESS OTHRWISE PECIFIED TOLERANCES (一般公差) 0.5~6 = ±0.2 >6~30 = ±0.4 >30~120 = ±0.6 >120~315 = ±1 >315~1000 = ±1.6 ANGLES(角度) = ±5°	CHECKED	 雅鈦企業有限公司 Aec Connectors Co., Ltd.	
6					DRAWN <i>Jim</i>				
5	screw	1	brass	nickel			SCREW-202N-M4XP0.5X4.0mm		DATE 2015. 01. 12
4	shell	1	POM	black			DRAWING NO. RP-4046PMRD/WEG(Tc)-A-8.5		FILE NO. DRAWINGAUDIO\RP-4046PMRD/WEG(Tc)-A-8.5
3	solder tab	1	copper	gold					
2	contact pin	1	tellurium copper	gold					
1	body	1	nylon	red/white					
NO.	Description	Unit	Materials	Finish	Drawing No.	SCALE 2 : 1	UNIT MM		